

E-PoC for Android & iOS

Professional Smartphone / Tablet E-PoC Application

Quick Start User Guide



IMPORTANT

By using this product you agree to the terms and conditions of Entel's E-PoC Service License which can be viewed here: www.entel.co.uk/EPoC_LICENSE

1. HOW TO INSTALL

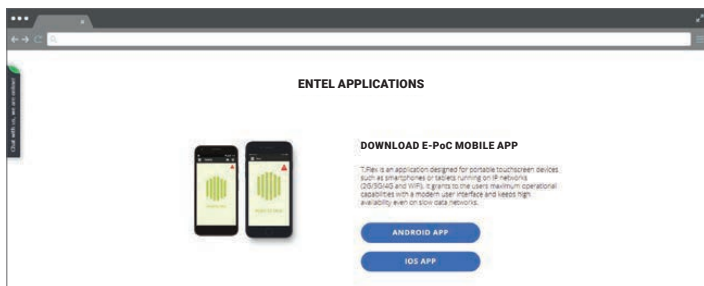
1.1. MINIMUM SYSTEM REQUIREMENTS

ANDROID	
Component	Recommended
Operating system	Min: Android OS version 4.1
Processor	Dual-core 1 GHz Cortex-A9 processors (or processors capable of running its instruction set or equivalent)
System memory	1024 MB RAM
Built-in storage	4 GB
Display	TFT capacitive touchscreen, 16M colors, multi-touch, 480 x 800 pixels, 4.0 inches, 233 ppi
Network / Data	3G network: HSDPA 900 / 2100 WLAN: Wi-Fi 802.11 b/g/n Bluetooth v4.0, A2DP UMTS, GPRS, EDGE
Positioning	GPS, A-GPS, GLONASS
Audio	Loudspeaker, microphone, 3.5mm jack for mic., headset and PTT accessories
Camera	5 MP, autofocus
Sensors	Accelerometer (only for Man Down and Detect Impact feature)
Battery / Charger	Battery capacity 1700mAh or more / USB charging

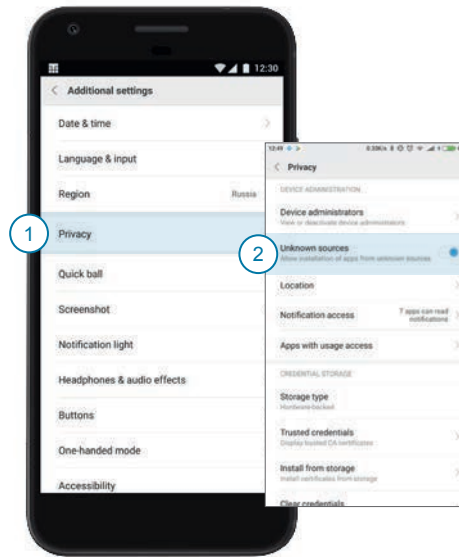
IOS	
Component	Recommended
Operating system	Min: iOS version 10
Processor	Dual-core 1.3 GHz Swift (ARM v7-based) and above
System memory	1 GB RAM DDR3
Built-in storage	2 GB
Display	LED-backlit IPS LCD, capacitive touchscreen, 16M colors 750 x 1334 pixels, 16:9 ratio (~326 ppi density)
Network / Data	HSDPA 850 / 900 / 1700 / 1900 / 2100 - GSM, LTE band 4(1700/2100), 17(700) - GSM, LTE 850 / 1800 / 2100 - GSM. WLAN: Wi-Fi 802.11 a/b/g/n Bluetooth v4.0, A2DP, LE, GPRS
Positioning	GPS, A-GPS, GLONASS
Audio	Loudspeaker, microphone, 3.5mm jack for mic., headset and PTT accessories
Camera	8 MP (f/2.4, 33m, 1/3.2", 1.4 µm), autofocus
Sensors	Accelerometer
Battery / Charger	Battery capacity 1400mAh and above

1.2. DOWNLOAD

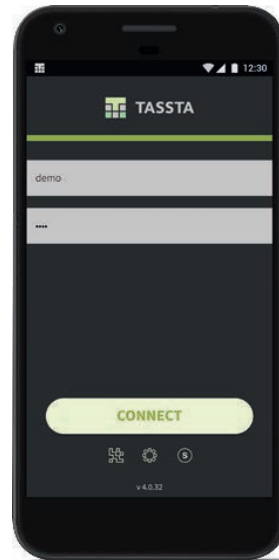
To download the latest version of E-PoC Application go to www.entel.co.uk/EPoC_Smartphone



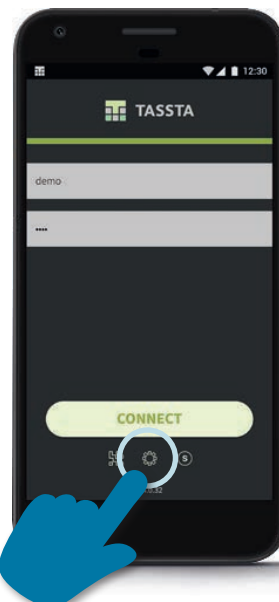
1.3. ENABLE UNKNOWN SOURCES



1.4. START THE E-PoC APP



1.5. ENTER SETTINGS




Synchronize your user name, password, server and port with E-PoC Server.

You can also adjust other settings like: Event Sounds, Autologin, Preferred Bluetooth Device, etc.

Exit settings.
All the data will be saved automatically!

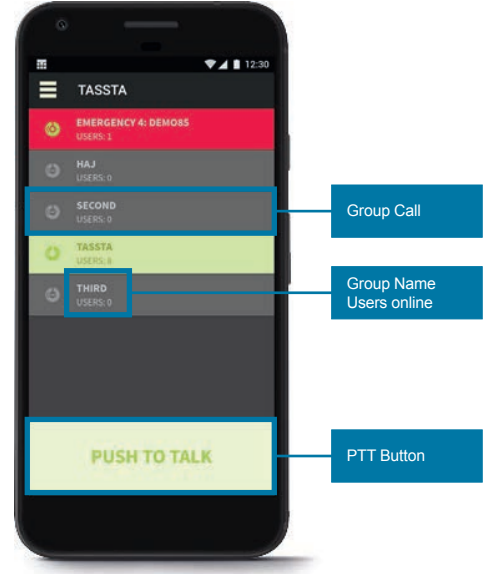
1.6. NAVIGATE



Press the MENU icon  to open the navigation menu.
Swipe up/down for navigation.

2. FEATURES

2.1. GROUP CALL



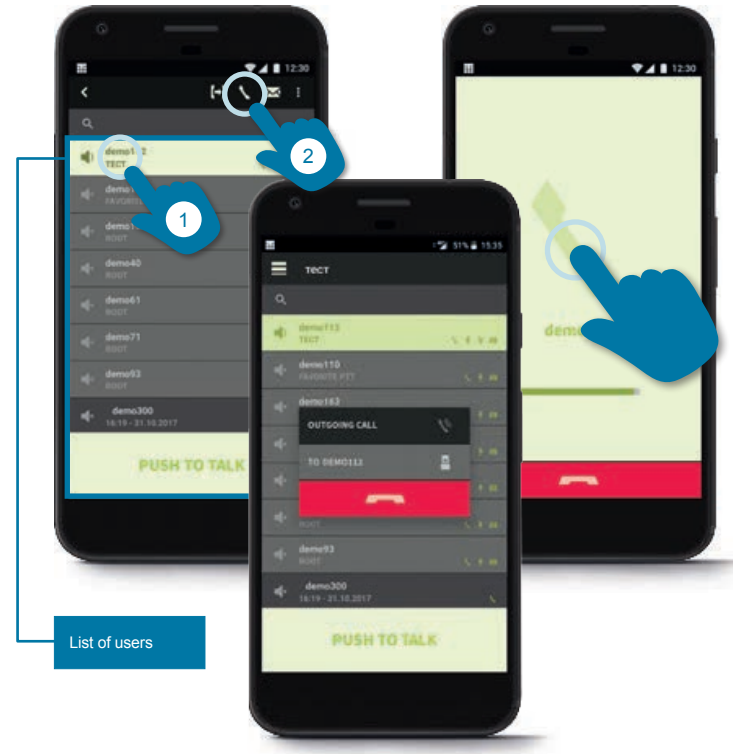
Select the relevant group and press the PTT button.


1.7. COMMUNICATE

PUSH - HOLD & SPEAK - RELEASE!

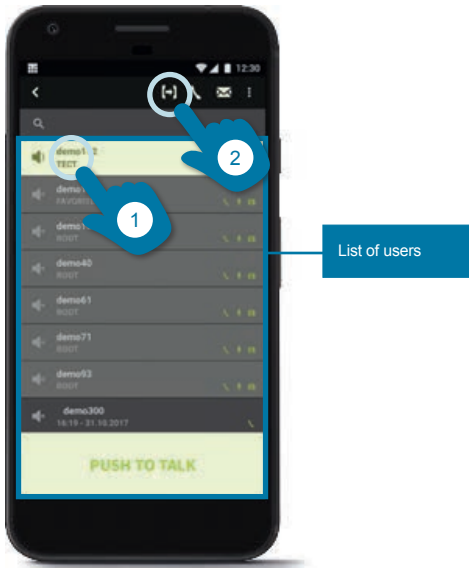


2.2. INDIVIDUAL CALL




Select the relevant user and press the CALL icon 

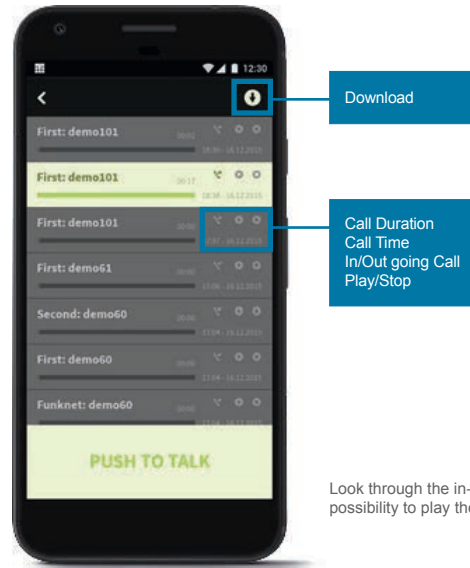
2.3. DIRECT CALL



List of users

Select the relevant user and press the DIRECT CALL icon , the user does not need to pick up the call, it will be automatically connected.



2.5. HISTORY



Download

Call Duration
Call Time
In/Out going Call
Play/Stop

Look through the in- or outgoing calls and the possibility to play them back at any time.

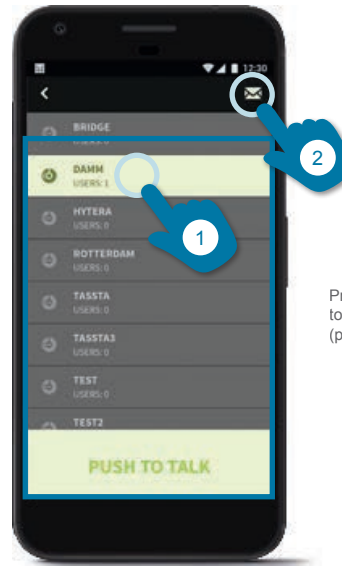
- 1 Tap on the conversation you want to listen.
- 2 Load  the conversation.
- 3 Press the PLAY icon  to listen to the conversation.


2.4. INACTIVITY TIMEOUT

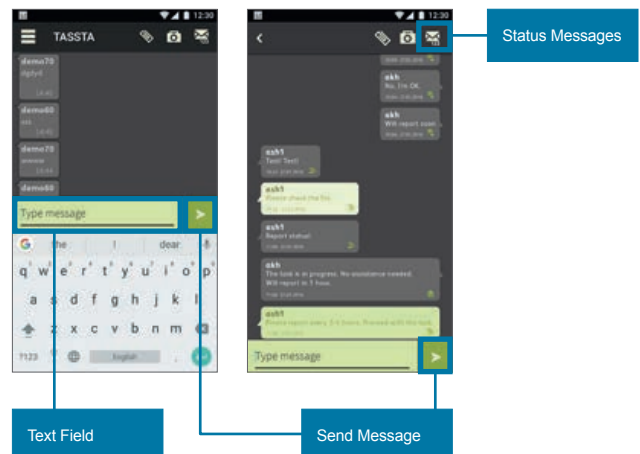


If none of the parties involved in the call presses the PTT button, the call will end automatically. This feature must be activated in E-PoC Server.

2.6. MESSAGING



Press the relevant group or user with a long touch and then touch the MESSAGING icon  (predefined status messages possible)

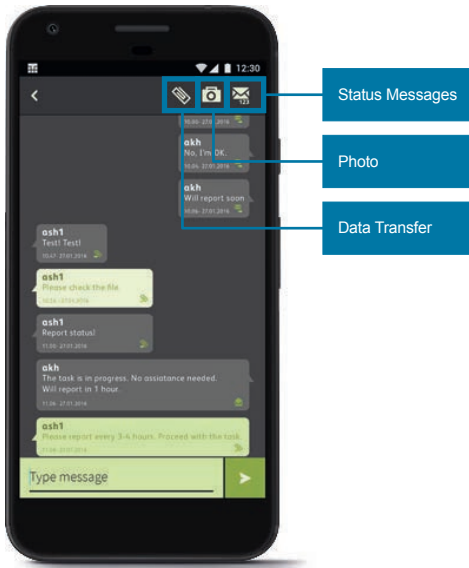




Text Field

Send Message

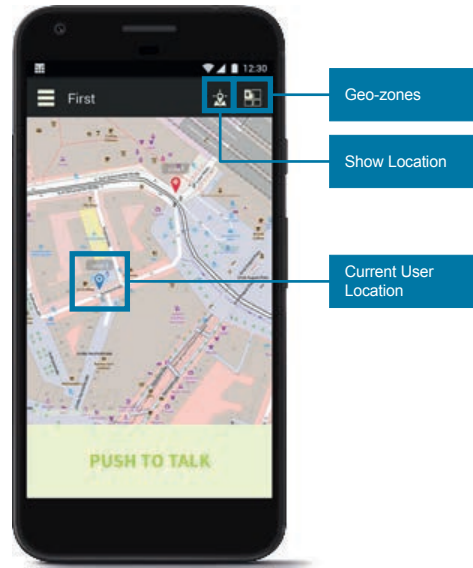
Status Messages

2.7. DATA TRANSFER



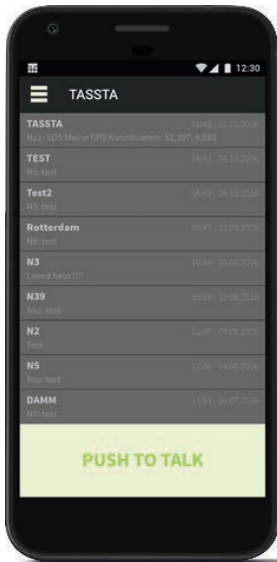
You can send files from your Smartphone. By tapping on the CAMERA icon  you may take a direct picture and sent it immediately or send a file by clicking on the CLIP  icon.

2.9. MAP / GPS TRACKING



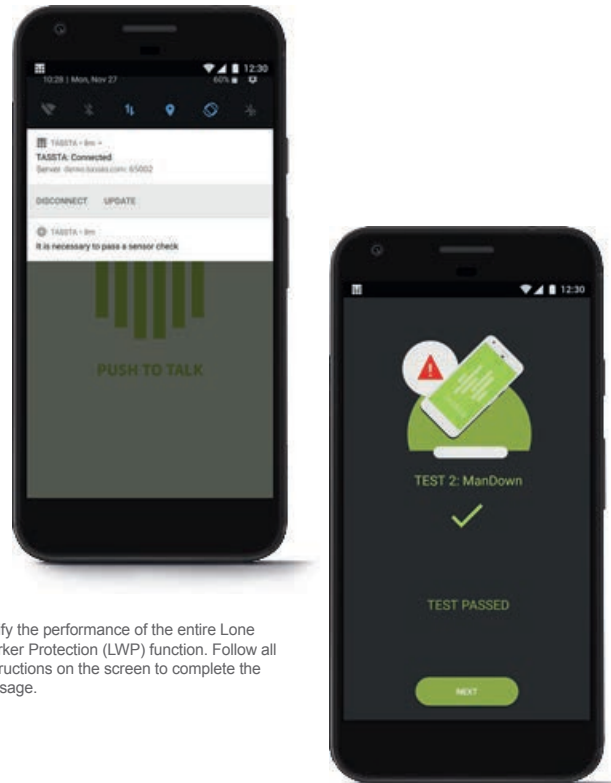
Track your location or the location of other users on the map. Ensure you have a Smartphone with enabled GPS Location.

2.8. RECENT HISTORY



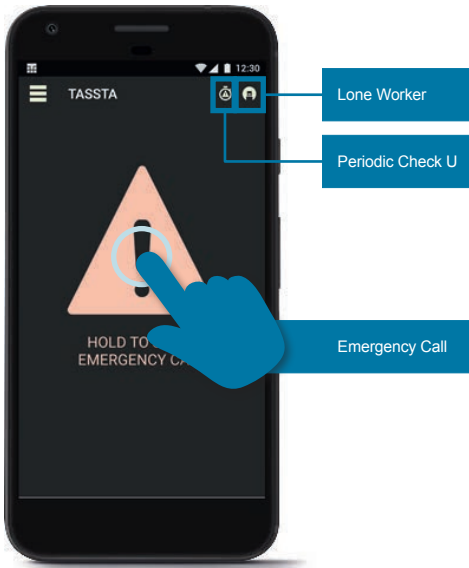
An instant access to recent history of the individual and group calls.

2.10. SENSOR CHECK



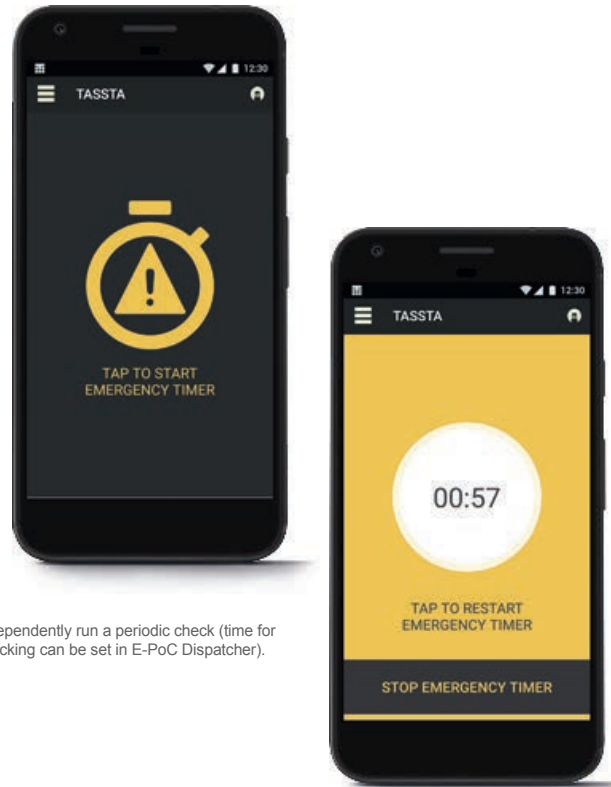
Verify the performance of the entire Lone Worker Protection (LWP) function. Follow all instructions on the screen to complete the passage.

2.11. EMERGENCY



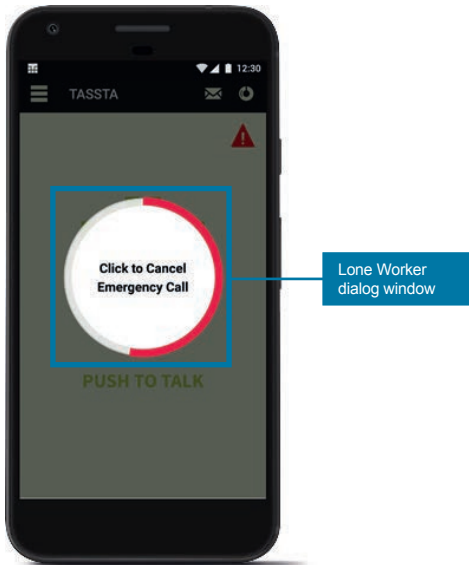
Start an Emergency Call, open Periodic Check U and Lone Worker settings.

2.13. PERIODIC CHECK U



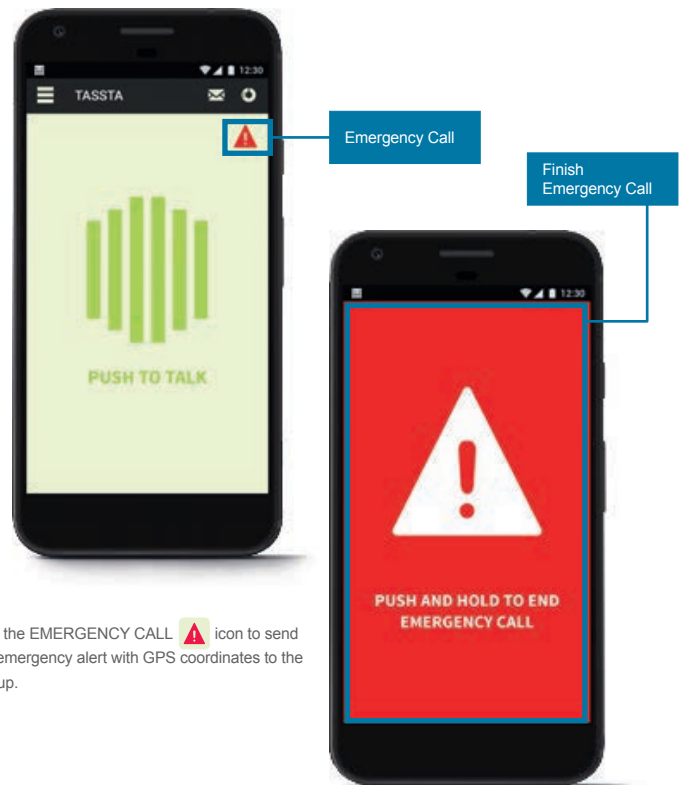
Independently run a periodic check (time for checking can be set in E-PoC Dispatcher).


2.12. LONE WORKER



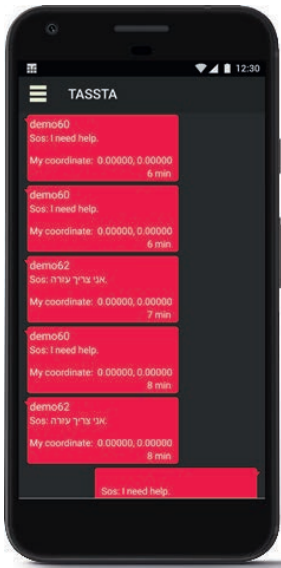
Tap the appropriate button on the pop-up dialog window to answer the Lone Worker control request.

2.14. EMERGENCY CALL



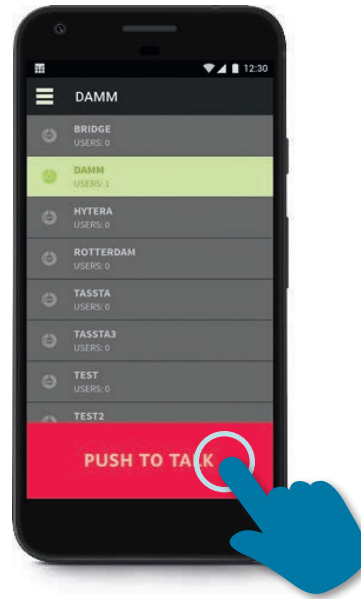
Tap the EMERGENCY CALL  icon to send an emergency alert with GPS coordinates to the group.

2.15. EMERGENCY JOURNAL



Here you can find a list of all the emergency messages.

2.17. BUSY CHANNEL



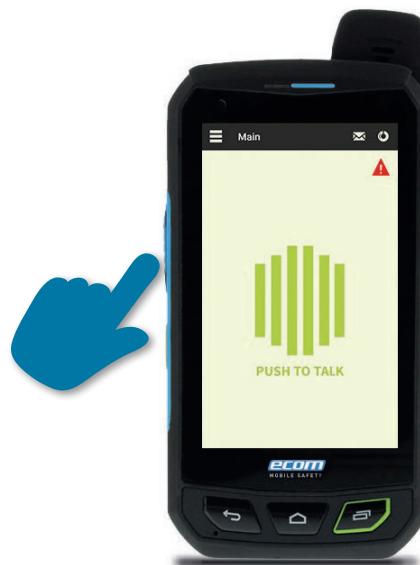
Red PTT button, shows you rejected PTT on busy channel. A call has been initiated by other group member.

2.16. QR CODE SCAN



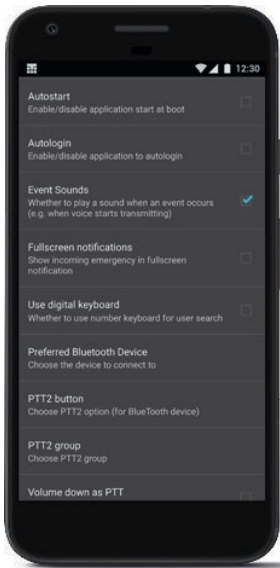
Scan QR Codes to simply setup your Smartphone E-PoC App by using the camera of your mobile device.

2.18. SIDE PTT BUTTON



Available on smartphones designed for special applications.

3. SETTINGS



Go to **SETTINGS**  in the drawer menu to change options.

5. LOGOUT



Disconnect E-PoC client from TASSTA GmbH server.

4. ABOUT



Get short information about E-PoC



Entel's E-PoC software has been optimised in conjunction with TASSTA GmbH

Contact

For more information about our products, please contact us:
Entel UK, 320 Centennial Avenue Centennial Park, Elstree, Borehamwood, Hertfordshire WD6 3TJ, United Kingdom

 +44 (0)20 8236 0032  info@entel.co.uk  entel.co.uk